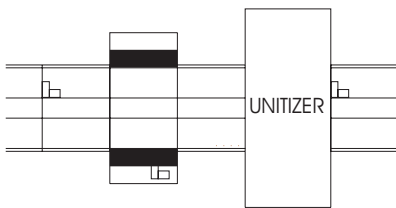
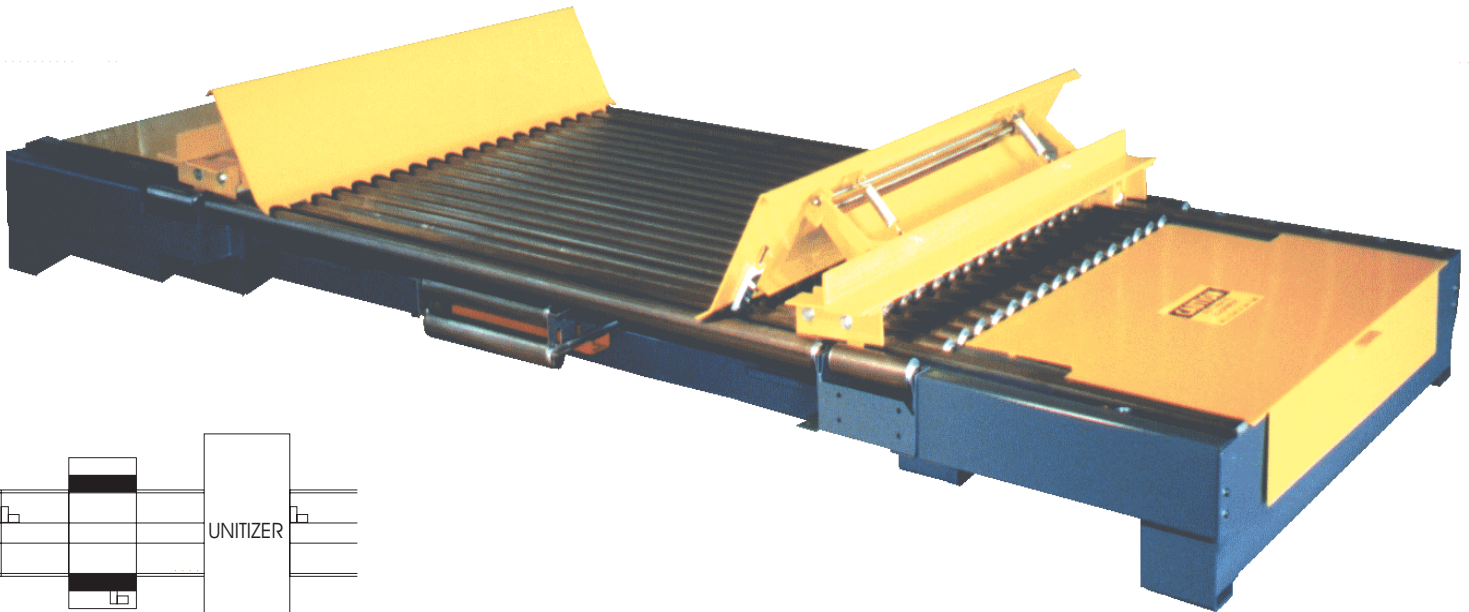


Load Centering Device (LDC)

SPECIAL DUTY DEVICE



LDC/LDSs center and square unit loads prior to unitizers.

PRODUCT DESCRIPTION

Mainline Conveyor System's Centering/Squaring Device consists of a roller conveyor section with a pair of opposably mounted pusher heads on either side. The heads are pulled along a pair of guide rails toward each other at equal speeds by means of power transmission chains driven by a gearmotor. The motion of the heads when driven toward each other will push a unit load into the opposing head centering it on the conveyor. A controlling mechanism may be adjusted to determine the amount of force with which heads "squeeze" the load once it has arrived at the center of the conveyor.

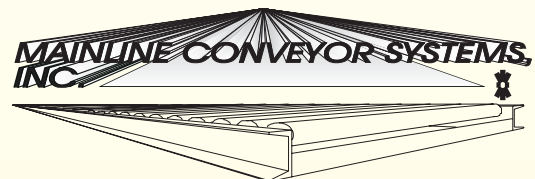
Heads provided may be fold-up or straight. Straight heads are fixed pusher bars. Fold-up heads include a scalloped plate that is spring loaded at a sloped position. The points of the scalloped plates extend below the surface of the rollers. As the head engages the load the plate moves to a vertical position and begins pushing the load toward the conveyor center.

APPLICATION

The Centering/Squaring Device is typically used prior to banding operations for unitized loads on the conveyor. With straight heads the unit provides excellent means for palletized load squaring and centering. With fold-up heads, the unit includes a scoop action to pick-up and fold-in bottom dunnage sheets.

FEATURES

- 1-1/2hp drive motor with means for controlling centering force
- All chain drive eliminates need for special drive cables
- 60" head width to handle long loads
- Scalloped plate intermeshes with roller surface to properly engage deck sheets of corrugated board loads.
- Available fold-up heads provides means for prefolding bottom dunnage sheets prior to banding operation.
- Available in several through clearance dimensions to suit any application.
- Nominal 12" TOR with 2-1/2" rollers on 3" centers.
- Unit is compatible with all centerbelt drive, belt driven live roller conveyors.
- Motor disconnect and position limit switches are prewired for easy installation.

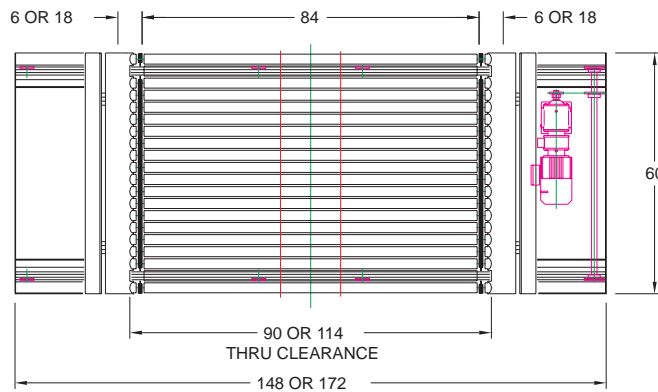


Special Duty Device

For Use With Accumulating and Nonaccumulating Conveyors

LOAD CENTERING AND SQUARING DEVICE (LDC/LDS)

Dimensions (in.)



GENERAL SPECIFICATIONS

Nominal Conveyor Width	Matches adjacent powered conveyor, plus 6" or 18" gravity roller conveyor outriggers
Overall Module Width	Powered conveyor width plus 64" or 88"
Maximum Through Clearance	90" or 114", based on 84" powered conveyor width
Minimum Closed Distance	26"
Pusher Head Width	60"
Minimum Height	12" T.O.R.
Load Capacity	2,500 lbs.*
Head Speed	45 FPM

POWER REQUIREMENTS

Gearmotor	1-1/2 HP, 230/460v/3ph/60Hz with Integral brake and magnetic particle clutch
Clutch	DC clutch controller requires 110vac power
Full Load Amperage (FLA)	2.32 amps

CONSTRUCTION

Sideframe	Formed angle (FL6.5) for reduced profile
Frame	Rigid, all-welded steel construction.
Drive Mechanism	Opposable pusher heads simultaneous pulled by a pair of widely spaced #60 roller chains, magnetic clutch, and brakemotor.
Gearmotor Mounting	Adjustable base plate, #60 roller chain to head shaft.
Fold-up Heads	Scalloped plate mounted on a spring loaded four bar linkage.

CONTROL OPTIONS *

Manual Operation	Pushbutton, operator actuated
Automatic Operation	Device position sensors combine with Load detecting sensors and control logic to position, center, and square a unitized load. Manual controls are included with automatic controls.
PC Controls	

* Contact Mainline Conveyor Systems, Inc. for additional control or capacity information.

10970 North Holland Drive
Mooreville, IN 46158
(317) 831-2795
FAX (317) 831-2719

