

Mesh Belt Conveyor (MBC)



Mesh Belt Conveyors are provided with a low friction slider bed support.

PRODUCT DESCRIPTION

Mesh Belt Conveyor employs a plastic link style belt for conveying loads. It has a fixed pitch dimension between the links and is driven by sprockets similar to roller chain. These belts are provided as flat top belts with or without textured surface.

Driving sprockets are mounted on a shaft located near the center of the conveyor length. Multiple sprockets are mounted on the drive shaft at predetermined intervals to support the load to be moved. The exposed belt is supported by a slider bed surface of low friction materials between UHMW side guides.

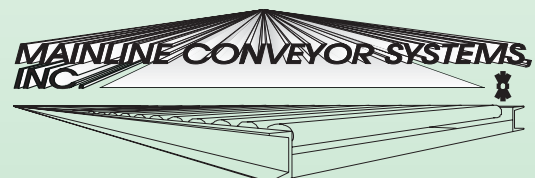
A terminal roller at either end of the conveyor directs the belt to its return path. A pair of wrap rollers flank the drive shaft and sprockets, and provide belt wrap to facilitate drive. Belt sag is provided on either side of the center between the wrap and terminal rollers. The entire conveyor is supported by a structural frame to provide a 12" TOB conveying surface.

APPLICATION

Mesh Belt Conveyors serve two main purposes. The first is to provide a conveyor that does not cause sheet walk in corrugated board, and thereby maintain the stability of the board stacks as they move along the conveyor. The second purpose is to provide a flat stable surface to allow operators to walk on and approach the loads more safely for various quality control purposes.

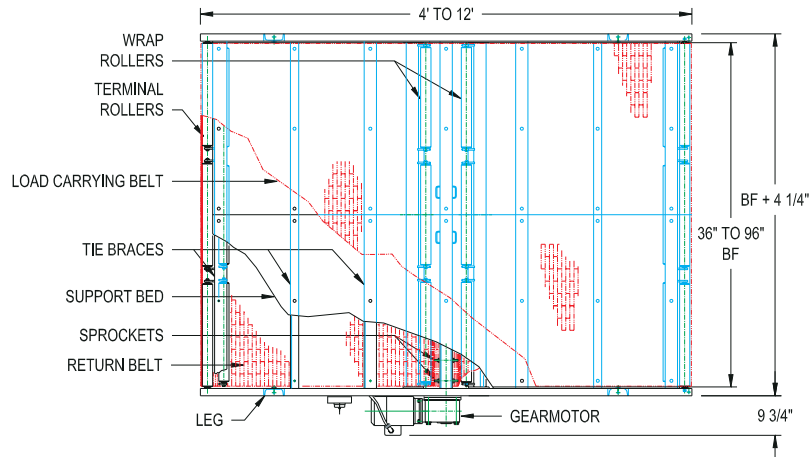
FEATURES

- Eliminates sheet walk in stacks of corrugated sheets.
- Provides stable flat surface for operators to walk on.
- Low profile, 12" TOB
- Small diameter terminal rollers provide minimum transition gap with adjacent conveyors.
- Center drive location allows load movement in either direction for reversing applications.
- Conveyor widths available up to 96" BF.
- Rough top surface available for improved traction for load and operator.
- Requires no field assembly; self contained unit.



MESH BELT CONVEYOR (MBC)

Dimensions



GENERAL SPECIFICATIONS

| | |
|------------------------|--|
| Nominal Conveyor Width | 36" through 96" bf (6" Increments) |
| Conveyor Length | 4'-0" to 12'-0" |
| Height | 12" TOB standard; Other heights upon request |
| Drive Capacity | 60 lbs./sq. ft. (up to 5,000 lbs.)* |
| Conveyor Speed | 45, 60 FPM (other speeds upon request) |

POWER REQUIREMENTS

| | |
|-----------------------------|--|
| Electrical Supply; Amperage | 230-460V/3ph/60hz; 4.3 Amps(460V, 3hp) @ full load |
| Drive Gearmotor | 2 or 3 HP @ 45 or 60 FPM |

CONSTRUCTION

| | |
|--------------------------|---|
| Mesh Belt Conveyor frame | Standard Integral weldment includes: Sideframe: C5x6.7# Structural Steel channel Tie braces (cross supports): 3x2x1/4 Structural steel tubing and angle Legs: C5x6.7# Structural Steel Channel |
| Beltting | Polypropylene or Acetal flat top link belt with 1"P modular links for fabrication in 3" Incremental widths |
| Belt Support Bed | Laminated plywood panels, 3/4" thk; mechanically fastened to and supported by the tie braces |
| Drive Shaft & Sprockets | 1pc or 2pc 2" square shaft with 18T x 1"P sprockets mounted at approx. 6" centers across conveyor width |
| Wrap & Terminal Rollers | Standard spring retained rollers mounted to a structural member, in multiples of 2 or 3 depending on conveyor width Tube: 2.5" diameter x 11 gauge galvanized steel Shaft: 5/8" solid CR hex, retained in roller Bearing: Precision grade 6205 series sealed bearing |

CONTROL OPTIONS *

| | |
|---------------------|---|
| Manual Operation | Pushbutton operator-actuated |
| Automatic Operation | Combines with load detecting sensors and control logic to position and advance loads. |
| PC Controls | Pushbutton controls are included with automatic controls as application dictates. |

* Contact Mainline Conveyor Systems, Inc. for additional control or capacity information.

10970 North Holland Drive
Mooresville, IN 46158
(317) 831-2795
FAX (317) 831-2719

